

AIM Core Newsletter

June

Kiosk check in/check out is mandatory for equipment use.

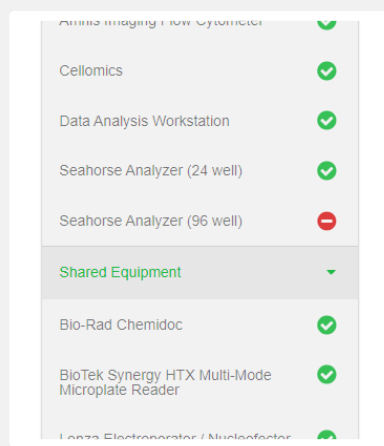
Every user must have their own log in. No account sharing.

To make **Reservations**: <https://my.ilabsolutions.com/account/login>

That is DIFFERENT from

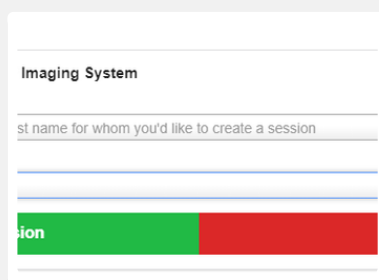
"Checking in" to **KIOSK** (which keeps tracks your actual user time):

https://unmcc.corefacilities.org/service_centers/4947/equipment_kiosk/dashboard



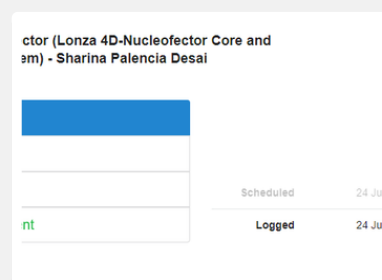
Check into the Kiosk (not the same as making reservations)

"Check In" on any computer in the core or scanning the QR code with your phone. The kiosk is the homepage of any internet browser in the core and in the favorites bar. Log in using your iLabs credentials and pick your equipment on the lefthand side.



Start your session

Click on the bottom green bar to start your session. If you have a reservation, click on our name. Overestimate the time you need on the machine (ex 30 min on the gel doc) and click "Create Session"

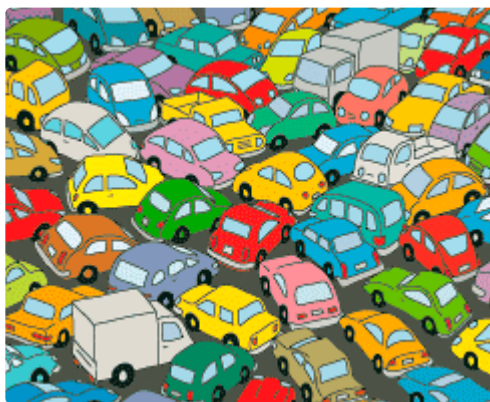


Click Start, Log Out and use equipment, Finish, or Extend

"Log out and use equipment" if someone else needs to log into the kiosk after you. When you're done with the equipment, log into the kiosk and click "Finish". If you need more time, log into kiosk and click "Extend" PRIOR to timing out. Don't forget to LOG OUT of your account (upper right)

CellInsight Users

Be prepared for Higher than Normal User Traffic for the next several weeks (July/Aug). To accomodate this temporary high traffic, please be judicious with making reservations as soon as you know, adjusting reservation times as your plans/usage changes, and signing into the kiosk.



Zoom Support and Tutorial Library

We now have a portable webcam and speakers that will allow you to connect with AIM staff should you have any questions while using the Cell Insight or AMNIS. We are working on similar capability for the Seahorse Analyzer. We are in the process of building a tutorial video library for all the equipment in the core. Links will be found via the iLabs scheduling under each equipment description as videos become available.



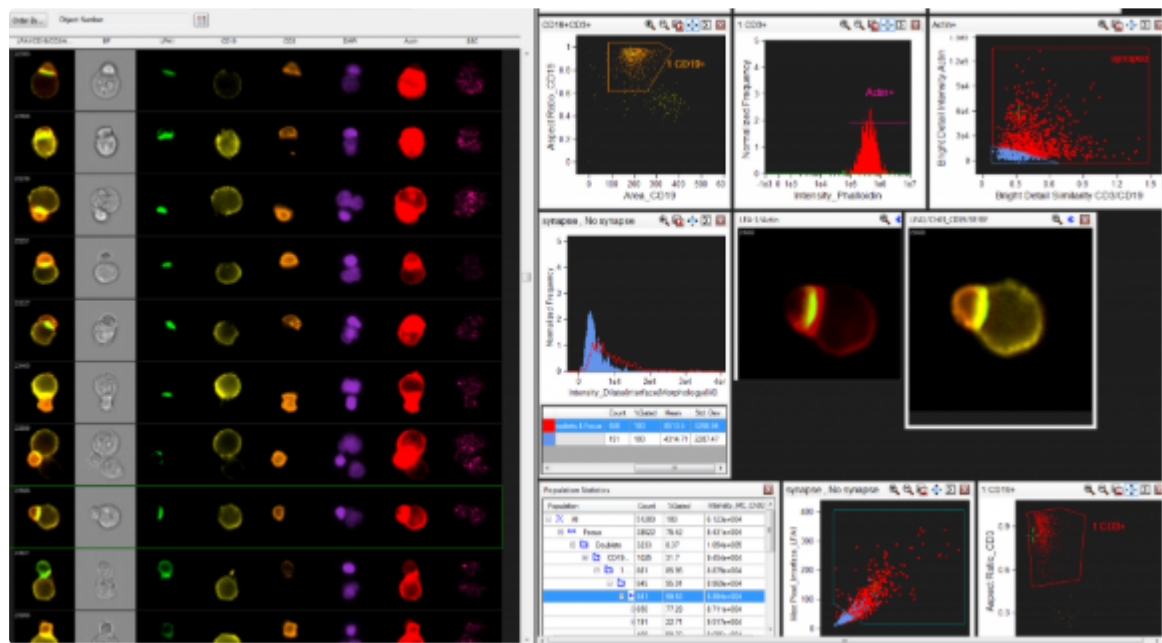
96 Seahorse Will Be Installed Soon

The 96 seahorse is now in the core and will be installed soon. With that will be a web based training. TBA! Also, contact spdesai@salud.unm.edu for details on discounts for Seahorse Consumables (10% since we just purchased equipment).



Optima MAX-TL is Here!

Reach the speeds you need for your separation demands with this compact, quiet and highly efficient tabletop ultracentrifuge. Training is required to use this equipment.



AMNIS Webinar coming soon. Date and Time TBA